






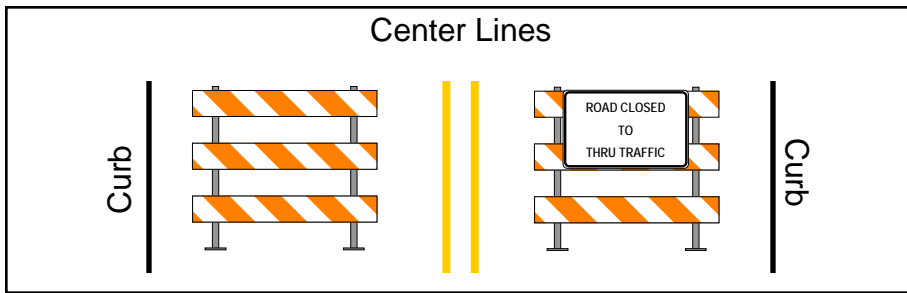
DEVICES THIS PAGE

Type IIIs: 13
Signs: 3
Volunteers: 2

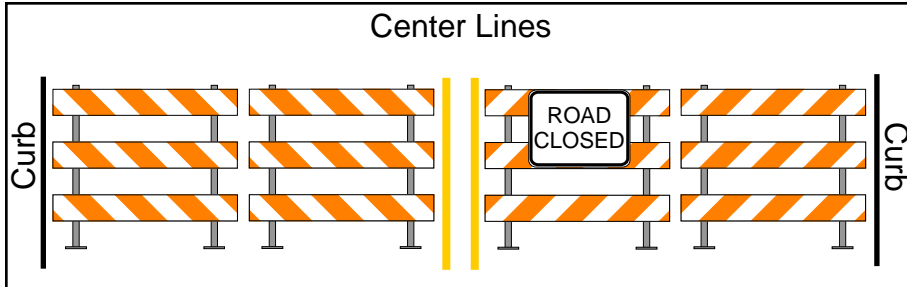
 Type III Barricades
(# of barricades)

 Turn bay closure
(See sheet 3 for detail)

 Traffic Control Volunteers
(See sheet 4 for detail)

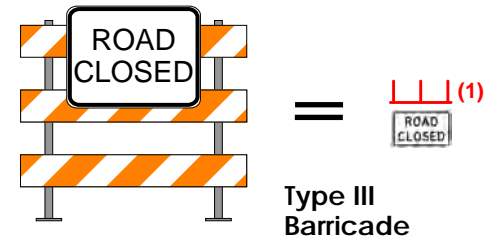
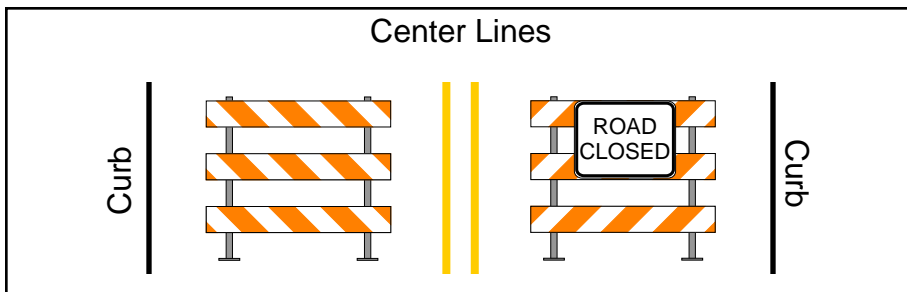


Place these first, like so, facing oncoming traffic.

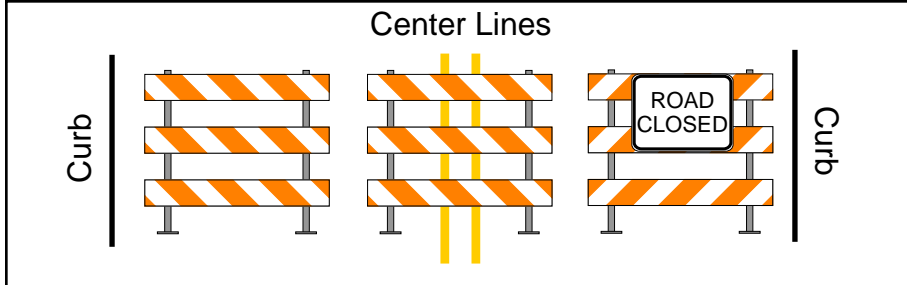


Then pull closures into place, facing oncoming traffic.

Note: A sufficient number of barricades shall be installed to fully close the roadway from curb to curb.



Each Barricades requires at least 2 sand bags



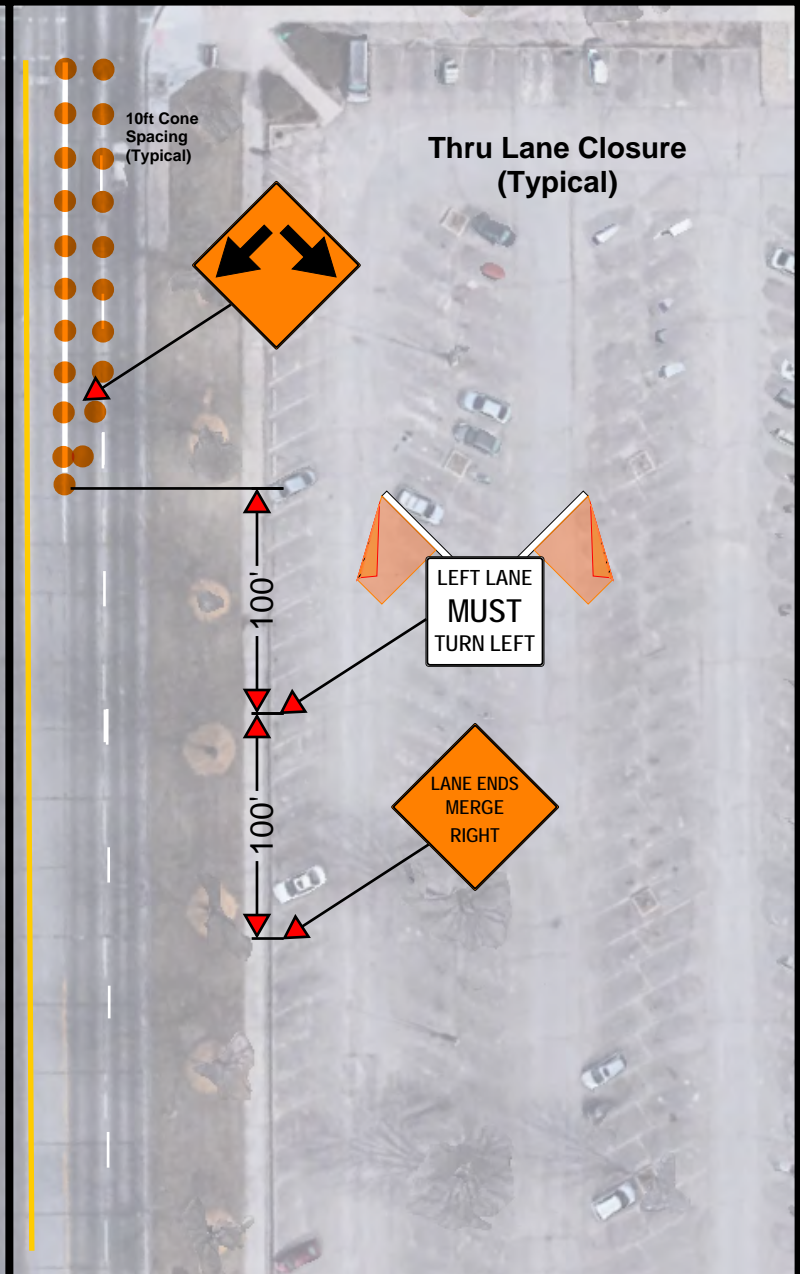
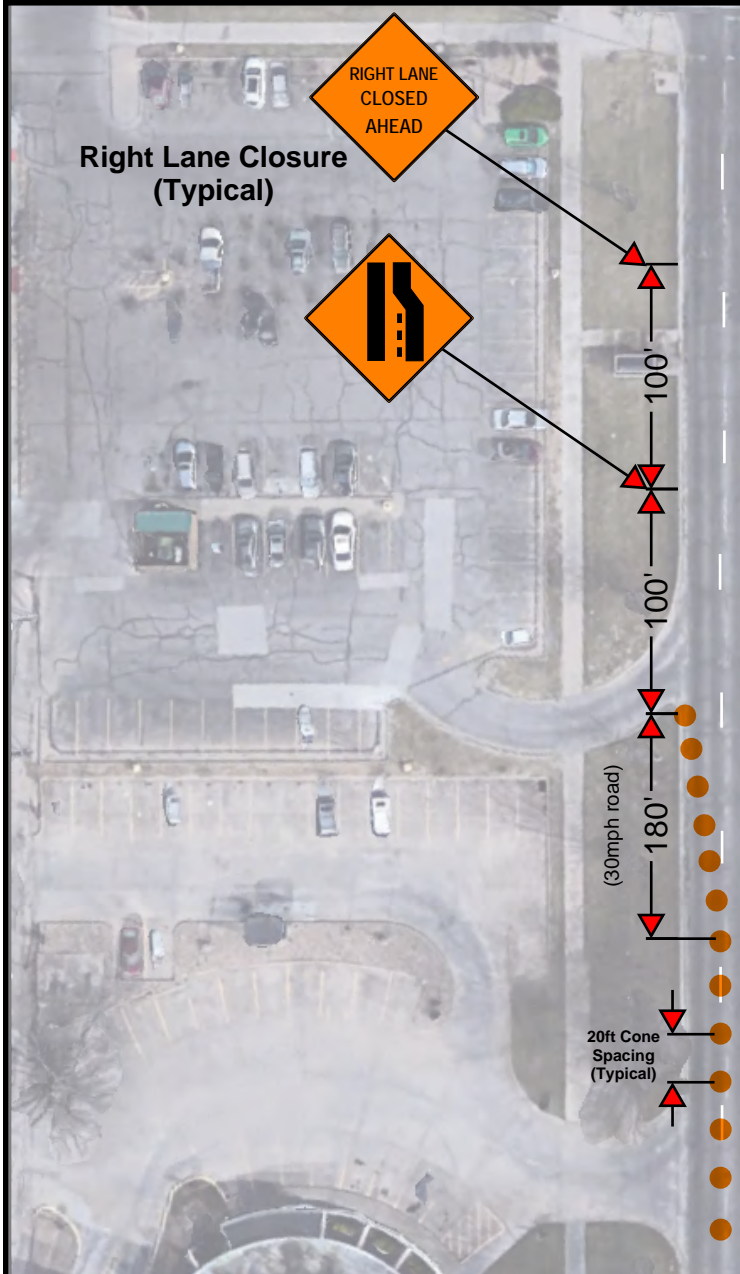
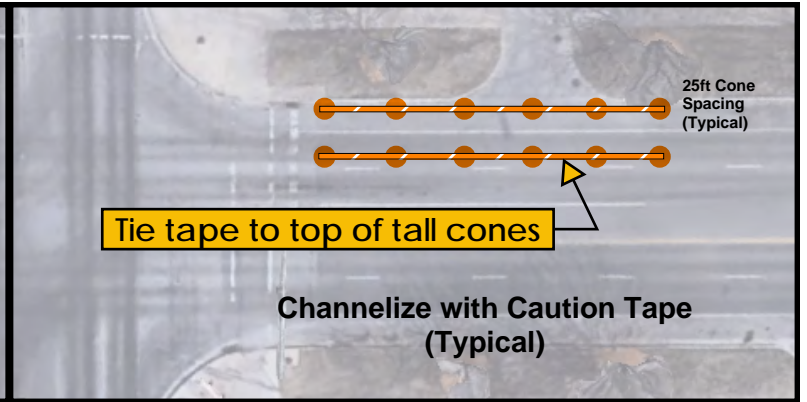
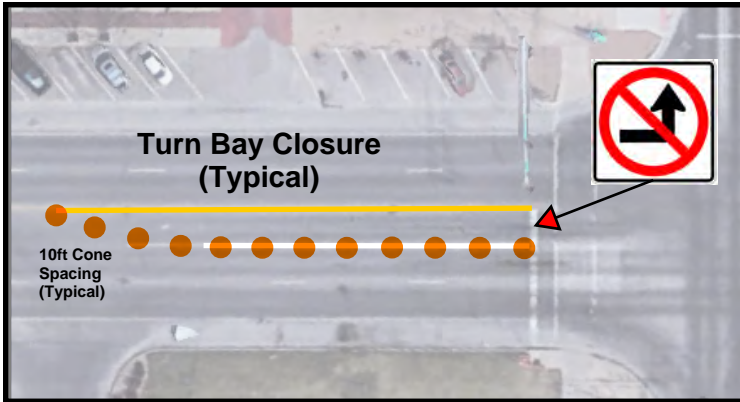
Fire lanes to be maintained in accordance with Fire Department recommendations

| | |
|---|--|
| <p>Traffic Control Company Contact Numbers:</p> <p>C-HAWKK – 1-785-542-1800 MATHER – 1-785-478-3780 TCS – 1-785-448-0402 CTCR – 1-785-232-8360</p> | <p>Volunteers must wear Class 2 ANSI vests at all times while in the roadway.</p> |
|---|--|

Total Devices:

- Barricades: 13**
- Signs: 3**
- Cones: 0**
- Caution Tape: 0 LF**
- Volunteers: 2**
- Vests: 2**
- Cone + Sign: 0**
- Ped Barricades: 0 LF**

ALL APPLICANTS SHALL CONTACT A TRAFFIC CONTROL COMPANY FOR ALL TRAFFIC CONTROL DEVICES, **APPLICANT SHALL HAVE THE COMPANY CONTACT TRAFFIC ENGINEERING AT LEAST 3 DAYS PRIOR TO EVENT AND CONFIRM ORDER HAS BEEN PLACED.** IF YOU ARE SUPPLYING YOUR OWN BARRICADES YOU SHALL SEND THE NCHRP 350 OR MASH COMPLIANT CERTIFICATE TO CITY OF TOPEKA TRAFFIC ENGINEERING WITH A PHOTO OF THE DEVICES NO LATER THAN 10 DAYS PRIOR TO YOUR EVENT. **FAILURE TO ORDER OR USE UNAPPROVED TRAFFIC CONTROL WILL RESULT IN EVENT CANCELLATION.**



Volunteer Info



Volunteers are required to...

- ~ Stay at their assigned closure.
- ~ Help emergency personnel or authorized vehicles through closures.
- ~ Wear a vest at all times while in the roadway.
- ~ Be at least 18 years old.
- ~ Set up and tear down traffic control.



Race & Marathon Instructions



Volunteer wearing safety vest stands at the right edge of the road at each approach to the race route.

- * As drivers stop, inform them of the race in progress.
- * Request that they wait if there is not a gap in the race to allow them to cross the road.
- * Request that drivers do not drive on the race route.

Place Cone + Sign in the center of the road at each approach to the race route.

